

Side Mount License Plate Holder with Diamond LED Tail Light



76090 SOLD EACH
 Machined from billet aluminum and then nicely chrome plated. These radius style side mount license plate holders have a smooth finish and feature a diamond shaped LED tail light. They will bolt to either 3/4" or 1" rear axles.

Side Mount License Plate Holder with Cateye LED Tail Light



76085 SOLD EACH
 Machined from billet aluminum and then nicely chrome plated. These radius style side mount license plate holders have a smooth finish and feature a cateye LED tail light. They will bolt to either 3/4" or 1" rear axles.

Side Mount License Plate Holder with Cateye LED Tail Light



76086 SOLD EACH
 Machined from billet aluminum and then nicely chrome plated. These vertical side mount license plate holders have a smooth finish and feature a cateye LED tail light. They will bolt to either 3/4" or 1" rear axles.

License Plate Cateye LED Tail Light



76087 SOLD EACH
 Replacement CNC LED tail light for license plate holders with cateye style tail lights.

Note : Not Dot Approved.

Side Mount License Plate Holder with Maltese Cross LED Tail Light



76133 SOLD EACH
Machined from billet aluminum and then nicely chrome plated. These horizontal side mount license plate holders have a smooth finish and feature a Maltese Cross LED tail light. They will bolt to either 3/4" or 1" rear axles.

Side Mount License Plate Holder with Maltese Cross LED Tail Light



76134 SOLD EACH
Machined from billet aluminum and then nicely chrome plated. These vertical side mount license plate holders have a smooth finish and feature a Maltese Cross LED tail light. They will bolt to either 3/4" or 1" rear axles.

Side Mount License Plate Holder with Maltese Cross LED Tail Light



76135 SOLD EACH
Machined from billet aluminum and then nicely chrome plated. These radius style side mount license plate holders have a smooth finish and feature a Maltese Cross LED tail light. They will bolt to either 3/4" or 1" rear axles.

Fender Mount License Plate Holder with Maltese Cross LED Tail Light



76136 SOLD EACH
Machined from billet aluminum and then nicely chrome plated. These horizontal fender mount license plate holders have a smooth finish and feature a Maltese Cross LED tail light. They mount to the fender using a supplied **rubber block**.

76137 SOLD EACH
Machined from billet aluminum and then nicely chrome plated. These horizontal fender mount license plate holders have a smooth finish and feature a Maltese Cross LED tail light. They mount to the fender using a supplied **block mount**.

Note : Fender mount license plate holders are supplied with either a rubber block mount or aluminum block mount depending on part number ordered.

Note : Not Dot Approved.

Stainless Side Mount Tail Light & License Plate Brackets

Here's a fine selection of simple, yet sturdy, axle-mount tail light and license plate brackets. Designed for either left side or right side mounting, these durable stainless creations are offered as a complete assembly for both license plate & tail light or license plate only. **They're made for 3/4" rear axles.**

Left Side Mount License Plate Holder



76122 SOLD EACH

Fits custom applications using 3/4" axles. Mirror polished **left side** mount stainless steel license plate bracket.

Left Side Mount Tail Light & License Plate Holder



76120 SOLD EACH

Fits custom applications using 3/4" axles. Mirror polished **left side** mount stainless steel tail light & license plate bracket. Takes Cat-eye style tail light PT# 76018 or 76058, not included.

Right Side Mount License Plate Holder



76123 SOLD EACH

Fits custom applications using 3/4" axles. Mirror polished **right side** mount stainless steel license plate bracket.

Right Side Mount Tail Light & License Plate Holder



76121 SOLD EACH

Fits custom applications using 3/4" axles. Mirror polished **right side** mount stainless steel tail light & license plate bracket. Takes Cat-eye style tail light PT# 76018 or 76058, not included.

Handlebar Switch



75009 SOLD EACH
Fits custom applications.
Chrome plated Hi / Low or turn
signal handlebar switch for
1" handlebars.

Universal Button Switch



75063 SOLD EACH
Fits custom applications.
Heavy duty universal Horn or Kill
button switch.

Universal Switch



75062 SOLD EACH
Fits custom applications.
Heavy duty universal Dimmer or Turn
signal switch.

Universal Stop Light Switch



75008 SOLD EACH
Fits custom applications.
Heavy duty universal stop light
switch. Pull on position, swivel
mounted and 5" long.

Button Switches

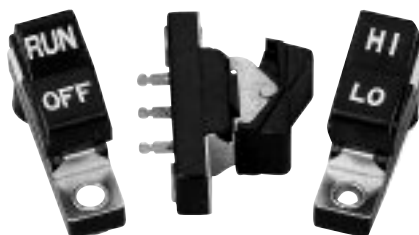


75015 SOLD EACH
Fits custom applications.
Button switch for starter, horn or turn
signal.

75016 SOLD PACK OF 10
Replacement short button cap.

75065 SOLD PACK OF 10
Replacement long button cap.

Rocker Switches



75064 SOLD EACH
Fits custom applications.
Run / Off rocker switch.

75066 SOLD EACH
Fits custom applications.
Plain rocker switch.

75017 SOLD EACH
Fits custom applications.
Hi / Low rocker switch.

Push Button Switch



75007 SOLD EACH
Fits custom applications.
Chrome plated horn / starter button.

Round Key Ignition Switch



75004 SOLD EACH
Fits custom applications.
Two position (off, ignition with lights)
ignition switch with round keys to
provide tamper resistance. Switch is
1-3/4" long with 1-3/8" outside diameter.

75003 SOLD EACH
Fits custom applications.
Three position (off, ignition and ignition
with lights) ignition switch with round
keys to provide tamper resistance.
Switch is 1-3/4" long with 1-3/8"
outside diameter.

Mini Push Button Switch



75214 SOLD EACH
This tiny little stainless steel push button
switch comes with a special radius
shaped spacer to allow mounting in
handlebars. Switch works for turn
signal, starter, horn, kill or hi-low, must
be used with a switch relay. Requires a
9/32" hole and 5/16" UNF nut. Switch
is less than 1/2" in diameter and sticks
only 1/4" above the handlebar surface.
Can also be used on flat surfaces
without using the radius shaped spacer.
Switch comes with 20" wires installed.

Handlebar Stop Light Switch



75014 SOLD EACH
Fits custom applications.
Handlebar stop light switch.

Custom Horn



75024 SOLD EACH
Fits custom applications.

Early Style Horn



75023 SOLD EACH
Fits custom applications.
Early style 12 volt electric horn with
nicely chromed grill.

Starter Push button Switch



75239 SOLD EACH
Fits custom applications.
Made in USA 15amp starter push button
switch with 15/32 - 32 UNS thread.

Horn Cover



175001 SOLD EACH
Fits V Star 650 models from 1998 thru
2006 and V Star 1100 models from
1999 thru 2006.
Making your presence known is a
beautiful thing. But the horn itself sure
isn't. This bolt-on chrome cover
ensures your horn is heard but not
seen.

12 Volt Custom Horn



75025 SOLD EACH
Fits custom applications.
12 volt universal horn with chrome face.

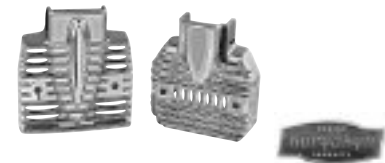
Trumpet Horn Kit



75067 SOLD AS KIT
Fits custom applications.

Chrome plated 12 voltroduction of the OEM trumpet horn.

Regulator Cover



150001 SOLD EACH
Fits all Road Star 1600 / 1700 models
(excluding Warrior).

150003 SOLD EACH
Fits all Road Star 1600 models.

Flow some chrome over your regulator
and add sparkle to this bland part.
These traditional finned style regulator
covers contain slots to allow ample air
flow to keep your regulator cool and
functional.

High Performance Maintenance Free Batteries

Killer Watts High Performance Maintenance Free batteries are a must if high power is top priority in a replacement battery. Killer Watts means more power, less maintenance and longer life.

Killer Watts High Performance Maintenance Free batteries are your best choice for motorcycles.

No Spilling, No Leaks, No Water to check and topping off is a thing of the past.

Increased Power and up to 30% More Cranking Amps thanks to a radial grid design and additional plates.

Long Lasting which means Killer Watts High Performance Maintenance Free batteries will last up to three times longer than conventional batteries.

Exceptional Resistance to Vibration makes Killer Watts High Performance Maintenance Free batteries the most reliable battery on the market today.

Patented Sealed Post

prevents acid seepage, reduces corrosion – extends battery life.

Safety Valve Flame/Arrestor

relieves excess pressure.

Thru-Partition Construction

provides shorter current path with less resistance than "over the partition" construction – you get more cranking power when you need it!

Special Active Material

is compounded to withstand vibration, prolong battery life and dependability.

Special Grid Design

withstands severe vibration, assures maximum conductivity.

Special Separator

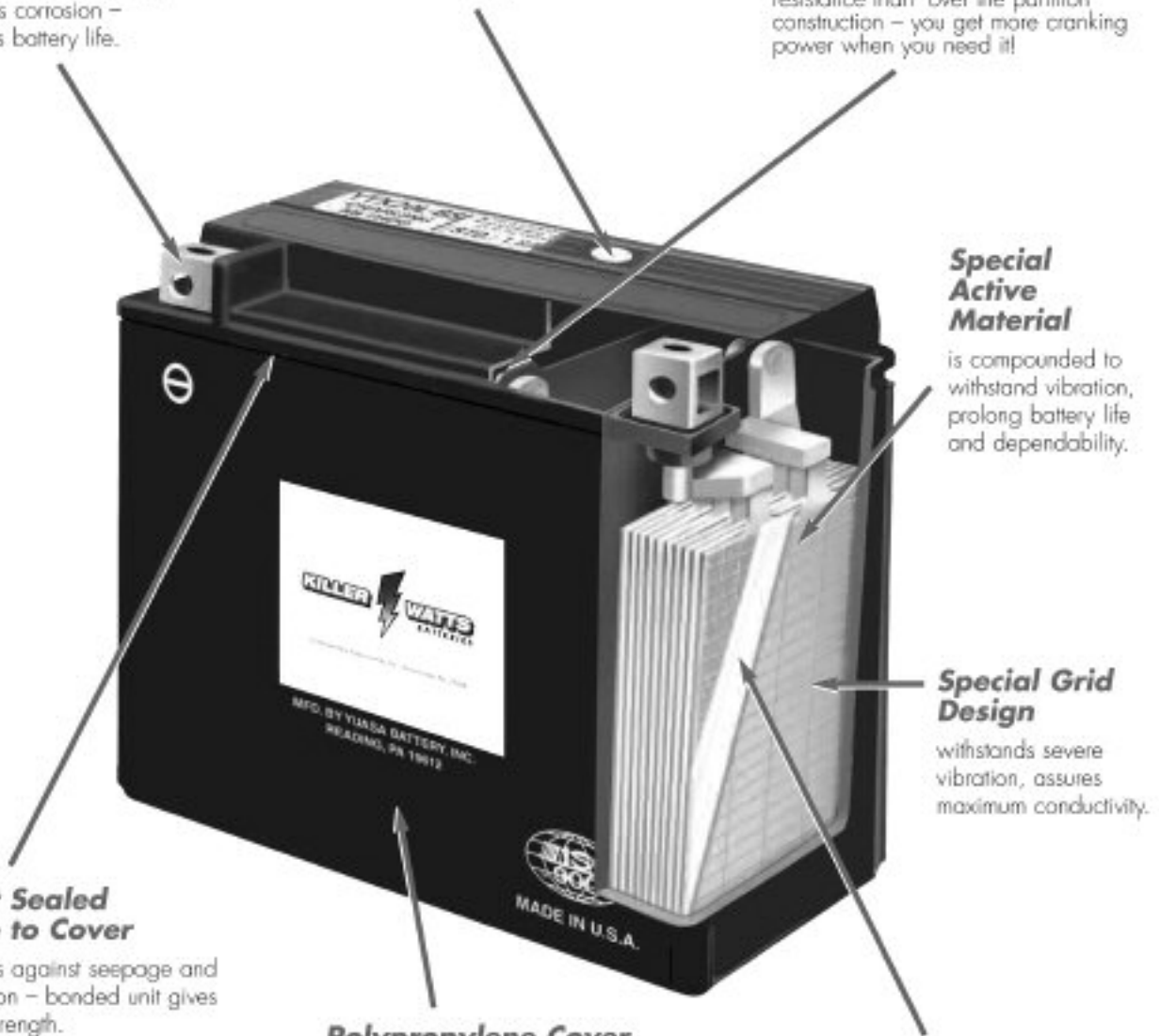
makes the battery spill-proof. Valve regulated design eliminates water loss and the need to refill with acid.

Heat Sealed Case to Cover

protects against seepage and corrosion – bonded unit gives extra strength.

Polypropylene Cover and Container

assures reserve electrolyte capacity for cooler operating temperatures; gives greater resistance to gas and oil – and impact in extreme weather conditions!



High Performance Maintenance Free Batteries



Absorbed Glass Mat (AGM) Technology is an advanced battery design used in Killer Watts Maintenance free batteries that eliminates water loss. Once it's filled with acid the battery is permanently sealed - so you'll never need to fill it with water or check the acid level.

Long life

Because of its lead calcium design, the AGM battery will hold its specific gravity more than three times longer than conventional lead antimony types. This means much longer periods between charges when the battery is used in a standby mode, like winter storage.

Sealed, Non-Spillable

It's totally sealed and all of the acid is absorbed in the special plates and separators, so there is no need to worry about acid leaks on valuable vehicle parts and accessories.

These batteries are filled, charged and sealed at the factory. But due to various shelf storage periods, all batteries should be checked prior to putting into service to determine if they have a minimum of 12.8 Volts. If not they will require charging at 1amp or less until they reach the minmum of 12.8 Volts before putting into service.

82005 SOLD EACH

Battery type : YTX20HL-BS

Voltage : 12V

Capacity : 18 Amp Hrs

Amps : 1.8

Cold cranking amps : 310

Dimensions : 6-7/8" x 3-7/16" x 6-1/8"

Weight w/o Acid : 12.4 lbs

Polarity :



Terminal Type :



Front View

Side View

Top View

82006 SOLD EACH

Battery type : YTX24HL-BS

Voltage : 12V

Capacity : 21 Amp Hrs

Amps : 2.1

Cold cranking amps : 350

Dimensions : 8-1/8" x 3-7/16" x 6-3/8"

Weight w/o Acid : 12.4 lbs

Polarity :



Terminal Type :



Front View

Side View

Top View

Note : Battery Fitment Applications on Following Page

High Performance Maintenance Free Battery Applications

Kawasaki			
Model	C.C.	Year	PT#
KZ1000-E ST, Shaft	1000	1979 thru 1980	82005
KZ1000, LTD, CSR	1000	1981 thru 1983	82005
KZ1000-R Replica	1000	1982 thru 1983	82005
KZ1000-C Police	1000	1980 thru 1981	82005
KZ1000-P Police	1000	1982 thru 2001	82005
KZ1000-P Police	1000	2000 thru 2003 & 2005	82005
ZG1000-A Concours	1000	1986 thru 2005	82005
KZ1100-B GP	1100	1981	82005
KZ1100-A, LTD	1100	1981 thru 1983	82005
ZG1200 Voyager XII	1200	1986 thru 2003	82006
KZ1300 Touring	1300	1979 thru 1982	82006

Yamaha			
Model	C.C.	Year	PT#
TX750	750	1973 thru 1974	82005
XV920 Virago	920	1982	82006
XV920M Midnight Virago	920	1983	82006
XV920R Virago	920	1981 thru 1983	82006
XV1000 Virago	1000	1984 thru 1985	82006
XV1100 Virgao (all)	1100	1986 thru 1999	82006
XS1100 (all)	1100	1978 thru 1981	82006
XJ1100 Maxim	1100	1982	82006
XVZ12 Venture Royale	1200	1983 thru 1985	82006
XVZ13 Venture Royale	1300	1986 thru 1993	82006
XVZ13 Royale Star / Venture (all)	1300	1996 thru 2006	82005
XV1600 Road Star	1600	1999 thru 2006	82005

Honda			
Model	C.C.	Year	PT#
GL1000 Gold Wing	1000	1975 thru 1979	82006
CBX1000 Super Sport	1000	1979 thru 1982	82005
CBX1000 Super Sport	1000	1982	82006
VF1100S V65 Sabre	1100	1984 thru 1985	82005
GL1100 Gold Wing	1100	1980 thru 1983	82006
GL1200 Gold Wing	1200	1984 thru 1987	82006
GL1800 Gold Wing	1800	2001 thru 2006	82005
NRX1800 Valkyrie Rune	1800	2004 thru 2005	82005
VTX1800C, F, N, R Retro, S	1800	2002 thru 2005	82005

Suzuki			
Model	C.C.	Year	PT#
QUV620F	620	2005	82005
GT1400GC, D, T Cavalcade	1400	1986 thru 1988	82006

Conventional Batteries



A workhorse battery engineered to protect against corrosion, withstand vibration and deliver high cranking power.

The industry standard for motorcycles, our Conventional Battery is anything but conventional. This workhorse is for applications requiring operation on uneven surfaces and vibrating environments - even when the weather's dealing its worst. It's the rugged, reliable and dependable battery that customers are looking for !

These features are built into our conventional manifold vented battery - and every battery in the Killer Watts line :

Patented separators provide high cranking power
 Though- partition construction delivers maximum power.
 Unique sealed posts resist corrosion for longer battery life.
 Polypropylene cover and container thwart damage from gas, oil and impact. Heat-sealed, bonded unit fabrication protects against seepage and corrosion.

Note : All Conventional Batteries are shipped dry without acid, the acid for battery activation is not included. Instructions on how to fill the battery with acid are included.

82000 SOLD EACH

Battery type : 12N7-4A

Voltage : 12V

Capacity : 7 Amp Hrs

Amps : 0.7

Cold cranking amps : 74

Dimensions : 5.32" x 3" x 5.25"

Weight w/o Acid : 4.9 lbs

Acid Volume : 16.9 oz

Polarity :



Terminal Type :



Front View



Side View



Top View

Suzuki		
Model	C.C.	Year
GT380 Sebring	380	1972 thru 1977
GS400X	400	1977 thru 1978
T500 Titan	500	1968 thru 1975
GT500 Titan	500	1976 thru 1977

Battery Rubber Strap



75031 SOLD EACH

Fits custom applications and FXST / FLST models 1991 to Present, FL(H)T models 1980 to 1992, XLCR models 1977 to 1978 and 1979 XL models.

Rubber battery hold down strap.

LED Battery Gauge



119002 SOLD EACH
Chrome plated LED Battery Gauge

119001 SOLD EACH
Black LED Battery Gauge



Unfortunately, most riders find out that their charging system has failed when they end up broken down on the side of the road. A little advance warning can keep you from being stranded in the middle of nowhere. Now you'll know at a glance whether or not your charging system is working properly.

Our LED Battery Gauge is an array of LEDs indicating the operating voltage of the bikes electrical system. Green LEDs represent the normal operating range of your charging system, 12.5v to 14.5v. Amber LEDs warn the rider that the bike is not charging. If the reading drops below 10v or exceeds 15v, a flashing red LED will alert the rider of an impending stall or the possibility of damage to the battery and/or sensitive electronic components on the motorcycle.

Simple two wire connection and a compact size (about 2" x 3/4" x 3/16") make installation a breeze. A daylight sensor automatically adjusts the brightness of the LEDs. They are bright during the day for visibility and dim at night so as not to blind the rider.

Moroso Blue Max Ignition Wire Sets



The superiority of Blue Max 8mm, 800 ohm Spiral Core Wire comes from over 25 years of continual refinement. The combination of our engineers' expertise and a rigorous testing program gives you the finest ignition wire available for your bike

74027 SOLD AS SET
Black lead wire set, Powersports, 90 degree terminal connector.

74028 SOLD AS SET
Red lead wire set, Powersports, 90 degree terminal connector.

74029 SOLD AS SET
Yellow lead wire set, Powersports, 90 degree terminal connector.

74030 SOLD AS SET
Black lead wire set, Powersports, Straight terminal connector.

Anti Vibration Mounts



28002 SOLD PACK OF 3
 Fits custom applications.
 Anti Vibration Mounts with 5/16" UNF studs.

28001 SOLD PACK OF 3
 Fits custom applications.
 Anti Vibration Mounts with 5/16" UNC studs.

Anti vibration mounts perfect for mounting gas tanks, oil tanks, battery boxes and all kinds of electronic parts to insulate them from vehicle vibrations.

Mount Stud Cover



28006 SOLD EACH
 Chrome aluminum rubber mount stud cover. Fits over the black rubber mount, adds a nice touch especially where the mounts are visible on wide tire frames.

74031 SOLD AS SET
Red lead wire set, Powersports, Straight terminal connector.

74032 SOLD AS SET
Yellow lead wire set, Powersports, Straight terminal connector.

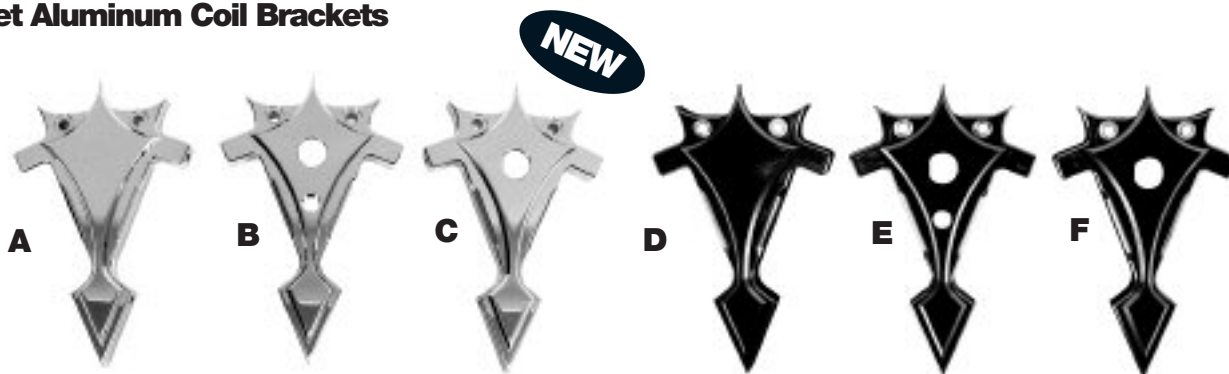
Wire Sleeve Kits

74024 SOLD AS KIT
Black insulated wire sleeve kit.

74025 SOLD AS KIT
Red insulated wire sleeve kit.

74026 SOLD AS KIT
Yellow insulated wire sleeve kit.

Billet Aluminum Coil Brackets



No holes

75232 SOLD EACH
Fits custom applications.

Beautifully **chrome plated** billet aluminum coil bracket with machined highlights, accepts single and dual tower Dyna brand coils. **(style A)**

75238 SOLD EACH
Fits custom applications.

Gloss black powered coated billet aluminum coil bracket with machined highlights, accepts single and dual tower Dyna brand coils. **(style D)**

With ignition switch hole

75230 SOLD EACH
Fits custom applications uses KW PT# 75004 or 75002 ignition key switch (not included).

Beautifully **chrome plated** billet aluminum coil bracket with machined highlights, accepts single and dual tower Dyna brand coils. **(style C)**

75236 SOLD EACH
Fits custom applications uses KW PT# 75004 or 75002 ignition key switch (not included).

Gloss black powered coated billet aluminum coil bracket with machined highlights, accepts single and dual tower Dyna brand coils. **(style F)**

With ignition switch & starter button hole

75231 SOLD EACH
Fits custom applications uses KW PT# 75004 or 75002 ignition key switch and a heavy duty starter button (not included).

Beautifully **chrome plated** billet aluminum coil bracket with machined highlights, accepts single and dual tower Dyna brand coils. **(style B)**

75237 SOLD EACH
Fits custom applications uses KW PT# 75004 or 75002 ignition key switch and a heavy duty starter button (not included).

Gloss black powered coated billet aluminum coil bracket with machined highlights, accepts single and dual tower Dyna brand coils. **(style E)**

Chrome Plated Thunderbolt Coils



74008 SOLD AS KIT
Fits custom applications.

Chrome plated 12 volt ignition coil with black spark plug leads. Coil mounting bracket not included and must be ordered separately.

Improved version to the classic round style coils. Internal windings are 100% immersed in a genuine oil filled jacket which cannot become brittle or crack like in cheaper versions.

74009 SOLD EACH
Nicely chromed ignition coil mounting bracket for round ignition coils.

Champion Copper Plus Spark Plugs

Features include a wider base insulator which provides an easier path to speed the transfer of heat, and a longer insulator nose containing a center electrode of pure copper inside of chrome nickel to transfer heat between firing and help resist fouling.

Honda models

74033 SOLD IN PACK OF 4
Champion# RA8HC

Fits :

VT700C Shadow models from 1986 thru 1987
VT800C Shadow models 1998
VT1100 Shadow models from 1985 thru 2006
GL1500 Goldwing models from 1986 thru 1987
GL1500CD Valkyrie models from 1997 thru 2002

Suzuki models

74033 SOLD IN PACK OF 4
Champion# RA8HC

Fits :

VL800 Intruder Volusia models from 2001 thru 2004
VL1500 Intruder LC models from 1998 thru 2004
C50 Boulevard models from 2005 thru 2006
C90 Boulevard models from 2005 thru 2006

Kawasaki models

74033 SOLD IN PACK OF 4
Champion# RA8HC

Fits :

VN 1500 Vulcan models from 1987 thru 2005
VN 1600 Vulcan models from 2003 thru 2006
VN 2000 Vulcan models from 2004 thru 2006



Yamaha models

74033 SOLD IN PACK OF 4
Champion# RA8HC

Fits :

XVS 650 V Star models from 1998 thru 2006
XVZ 1300 A Royal Star models from 1996 thru 2001
XVZ 1300 TF Royal Star Venture models from 1999 thru 2006
XV 1600 Road Star models from 1999 thru 2003
XV 1700 Road Star models from 2004 thru 2006
XV 1700 PC Road Star Warrior models from 2002 thru 2006

74034 SOLD IN PACK OF 4
Champion# RN12YC

Fits :

XV 535 S Virago Special models from 1996 thru 1997
XV 535 S Virago models 1997
XV 750 Virago models from 1996 thru 1998
XV 1100 S Virago Special models from 1996 thru 1998
XVS 1100 V Star models from 1999 thru 2006



Champion Power Sport Spark Plugs

Honda models

74047 SOLD IN PACK OF 2
Champion# 8405

Fits :

VT700C Shadow models from 1986 thru 1987
VT800C Shadow models 1998
VT1100 Shadow models from 1985 thru 2006
GL1500 Goldwing models from 1986 thru 1987
GL1500CD Valkyrie models from 1997 thru 2002

Suzuki models

74047 SOLD IN PACK OF 2
Champion# 8405

Fits :

VL800 Intruder Volusia models from 2001 thru 2004
VL1500 Intruder LC models from 1998 thru 2004
C50 Boulevard models from 2005 thru 2006
C90 Boulevard models from 2005 thru 2006

Kawasaki models

74047 SOLD IN PACK OF 2
Champion# 8405

Fits :

VN 1500 Vulcan models from 1987 thru 2005
VN 1600 Vulcan models from 2003 thru 2006
VN 2000 Vulcan models from 2004 thru 2006

Champion Power Sport Spark Plugs are packaged for convenient over-the-counter consumer sales, features include a wider base insulator which provides an easier path to speed the transfer of heat, and a longer insulator nose containing a center electrode of pure copper inside of chrome nickel to transfer heat between firing and help resist fouling.

Yamaha models

74047 SOLD IN PACK OF 2
Champion# 8405

Fits :

XVS 650 V Star models from 1998 thru 2006
XVZ 1300 A Royal Star models from 1996 thru 2001
XVZ 1300 TF Royal Star Venture models from 1999 thru 2006
XV 1600 Road Star models from 1999 thru 2003
XV 1700 Road Star models from 2004 thru 2006
XV 1700 PC Road Star Warrior models from 2002 thru 2006

74044 SOLD IN PACK OF 2
Champion# 8812

Fits :

XV 535 S Virago Special models from 1996 thru 1997
XV 535 S Virago models 1997
XV 750 Virago models from 1996 thru 1998
XV 1100 S Virago Special models from 1996 thru 1998
XVS 1100 V Star models from 1999 thru 2006

Solo Seats

A



B



C



D



E



F



These seats are constructed with a steel seat base and are covered with high quality naugahyde. Use our seat springs and the correct bracket to mount on most frames for the old school ride. Available in BLACK.

25011 SOLD EACH

Style A : Plain Solo Seat.
Measures 11.5" long x 9" wide.

25013 SOLD EACH

Style B : Hi-Back Solo Seat.
Measures 11.5" long x 9" wide.

25012 SOLD EACH

Style C : Regal Solo Seat.
Measures 11.5" long x 9" wide.

25014 SOLD EACH

Style D : Large Plain Solo Seat.
Measures 13" long x 12" wide.

25016 SOLD EACH

Style E : Large Hi-Back Solo Seat.
Measures 13" long x 12" wide.

25015 SOLD EACH

Style F : Large Regal Solo Seat.
Measures 13" long x 12" wide.

Antique Style Pillion Pad



25017 SOLD EACH

Antique style pillion pad a perfect match for our solo seats. Pad measures 11" x 4-3/4" wide. Pad features reinforced grommets for mounting the "Old School" way. Made from black naugahyde.

On / Off Style Pillion Pad



25018 SOLD EACH

This on / off style pillion pad is the answer for the rider with an occasional passenger. 6 suction cups make this an easy on easy off deal. Pad measures 10-1/2" long x 5-3/4" wide x 3-1/2" high. Carpeted bottom is also easy on the paint. Made from black naugahyde.

Yamaha V-Star Single Seat with Separate Pillion



125003 SOLD EACH
Fits Yamaha V-Star **1100 Custom** models.

125004 SOLD EACH
Fits Yamaha V-Star **1100 Classic** models.

125002 SOLD EACH
Pillion seat with suction cups for Softail single seat PT# 125003 and 125004.

These Yamaha V-Star black Single seats and separate pillion seats are constructed with cast urethane foam and then covered with high quality naugahyde.

Yamaha V-Star Cobra Seat



125005 SOLD EACH
Fits Yamaha V-Star **1100 Custom** models.

125006 SOLD EACH
Fits Yamaha V-Star **1100 Classic** models.

Yamaha V-Star black Cobra seat constructed with cast urethane foam and then covered with high quality naugahyde.

Honda Shadow Pillion Seat



125009 SOLD EACH
Fits Honda Shadow VLX 600 models from 1999 to present.

Honda Shadow black Pillion seat constructed with cast urethane foam and then covered with high quality naugahyde.

Universal Retro Style Solo Seat



25048 SOLD EACH
Fits custom applications.

Universal Retro style solo seat constructed with a chrome plated seat pan then covered with black leather using chrome rivets. Seat has a flip in the back for support and to keep you from sliding off when riding. Seat measures **11.50" long and 9" wide**.

Note : requires solo seat mounting bracket kit, order separately.

Honda Shadow Universal Retro Style Solo Seat Mounting Kit



125011 SOLD AS KIT
Fits Honda Shadow VLX 600 models from 1999 to present.

Mounting kit for Universal Retro style solo seats **PT# 25047**.

Universal Retro Style Solo Seat



25047 SOLD EACH
Fits custom applications.

Universal Retro style solo seat constructed with a chrome plated seat pan then covered with black leather using chrome rivets. Seat has a flip in the back for support and to keep you from sliding off when riding. Seat measures **12.50" long and 11" wide**.

Note : requires solo seat mounting bracket kit, order separately.

Honda Shadow Universal Retro Style Solo Seat Mounting Kit



125012 SOLD AS KIT
Fits Honda Shadow VLX 600 models from 1999 to present.

Mounting kit for Universal Retro style solo seats **PT# 25048**.

Yamaha V-Star Universal Retro Style Solo Seat Mounting Kit



125007 SOLD AS KIT
Fits Yamaha V-Star **1100 Custom** and **1100 Classic** models.

Mounting kit for Universal Retro style solo seats **PT# 25047 and 25048**.

Seat Springs



25006 SOLD EACH
Fits custom applications.
3" seat spring

25007 SOLD EACH
Fits custom applications.
5" seat spring

Beautifully chrome plated universal seat springs, will fit most custom seat and saddles.

Universal Solo Seat Bracket



25019 SOLD EACH
This universal black powder coated solo seat nose bracket is perfect for our line of solo seats. Bolts right up for a clean uncluttered look.

Universal Tilt-Up Seat Bracket Square End



25020 SOLD EACH
Fits Custom applications.

Adapts to most seats and frames. Fits all top frame tubes up to 1-3/4" (45mm) and comes with slotted holes for flexibility in mounting. Quality steel construction with chrome plating.

Custom Tapered Seat Spring



25008 SOLD EACH
Fits custom applications.
3" tapered seat spring

Nicely chromed tapered seat spring, for almost all custom solo seat applications.

Universal Seat Bracket



25005 SOLD EACH
Fits custom applications.

Nicely chromed universal rear seat bracket.

Quick Release Seat Pin



25003 SOLD EACH
Fits custom applications. Precision machined stainless steel quick release seat pin. The pin is held in place by a spring loaded ball detent and is easily pushed out so you can remove the seat.

Universal Seat Bracket



25002 SOLD EACH
Fits all frame backbones up to 1-3/4" and comes with slotted holes for mounting.

Quality steel universal seat bracket with a chrome finish.

Phantom II Goggles



34001 SOLD EACH

These stylish goggles come with one piece polycarbonate lenses and include a cushioned headband and air vents to help prevent misting. Will fit over many spectacles.

Black Bungee Cords



81002 SOLD IN PACK OF 10
Black 24" Bungee cords.

81004 SOLD IN PACK OF 10
Black 16" Bungee cords.

These cords are all you need to handle your tie down needs without disturbing the appearance of your motorcycle.

Heavy Duty Flat Nylon Tie Down Straps



81001 SOLD IN PAIRS
Heavy duty black straps woven from weather resistant nylon web.

Heavy Duty Tie Downs



81003 SOLD IN PAIRS
Extra heavy duty tie downs.

The locking cam is 'toothed' and two sided, not just clamping the strap, but gripping it between two facing toothed jaws that will not vibrate loose or pull free. The strap is woven from weather resistant nylon web, is 5 feet long and 1" wide and fitted with 3/8" vinyl coated steel hooks.

Laser Alignment Tool



81006 SOLD AS KIT
Laser wheel alignment tool by Tiger Manufacturing.

For a motorcycle to turn, brake, accelerate and maintain stability at high speeds the front and rear wheels must be inline. That's why a motorcycle is called a single track vehicle. Most bikes are set-up by lining up the rear wheel belt or rear chain to the transmission pulley or sprocket, believe it or not, this is not correct. Actually, this should be handled AFTER the wheels are aligned.

By using this kit and the tools provided, you can quickly align the rear wheel to the front wheel and thus achieve dynamic stability. It's a simple tool that handles a very complex job. It takes an engineer to understand single-track vehicle dynamics. This tool keeps you out of school and on the road much safer. Used as instructed, it will make your bike stop straight and do burnouts without going sideways. Your belt will last much longer, so will chains and tires. Plus, when you get a little wild in the corners the bike will go around right and left corners equally. Also, at high speed it will feel solid, instead of like you are on ice.