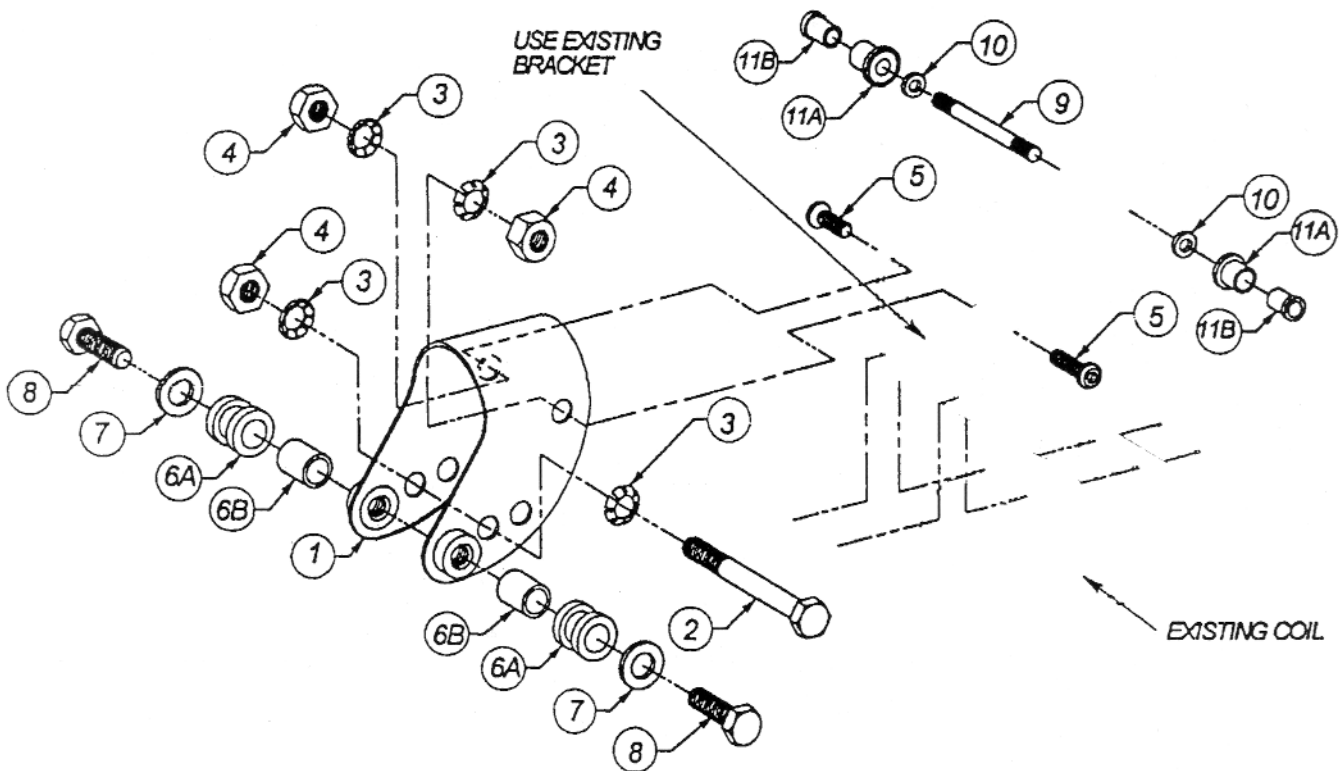


Part Number : 20038

WARNING: CHECK ALL MOUNTS AND FUEL LINE BEFORE FUELING AND TEST RIDING

- NOTE:**
1. TEST FIT THE TANK ON THE MOTORCYCLE BEFORE PAINTING. CHECK THE TURN SIGNAL, HANDLEBAR CONTROL AND TRIPLE TREE CLEARANCE.
 2. ALWAYS PRESSURE CHECK TANK BEFORE PAINTING AND INSTALLATION.
 3. USE LOCTITE ON FIRST THREE THREADS OF ALL HARDWARE.
 4. **NOTE:** AS WITH ANY FUEL TANK, PARTICULARLY ONE WHERE CUSTOM PAINT IS TO BE APPLIED, THE TANKS MUST BE PRESSURE TESTED, THEN SEALED WITH TANK PREP BEFORE PAINTING.

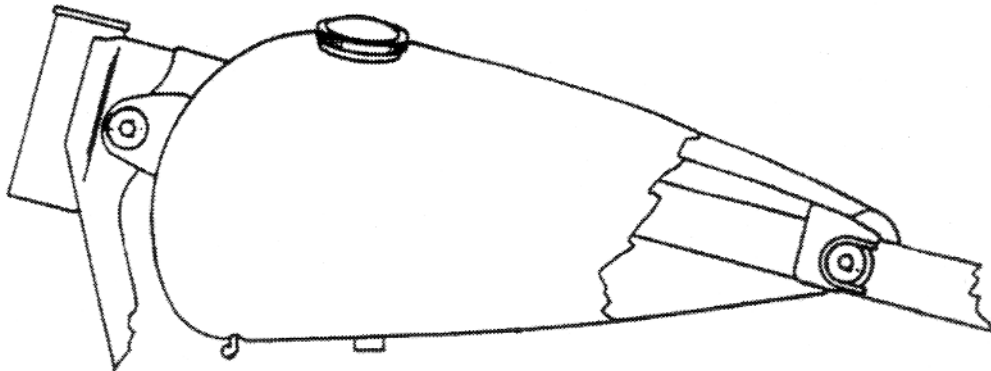
'95 & LATER TANK INSTALLATION



1. Remove existing fuel tank. Retain the petcock. Remove the horn on 883 models.
2. Mount front bracket (1) onto frame using bolt (2), star washers (3) and nut (4). Pass bolt through the hole closest to the front in bracket (1) and then through OEM frame front tank mounting hole. Wiring loom must route under bracket on most models. Care must be taken as to not pinch wiring.
3. Attach coil to coil bracket (12) using bolts (13), and lock nuts (14). (SEE 95/94 AND LATER COIL BRACKET INSTRUCTIONS).
4. Attach the coil and coil bracket using the 2 button head screws (5), star washers (3) and nuts (4). Coil mount (12) attaches to holes on front bracket (1) that are to the rear of the bracket.

NOTE: ON 1995 MODELS USE THE SECOND HOLE FROM THE REAR, AND BRACKET SUPPLIED IN THIS KIT.

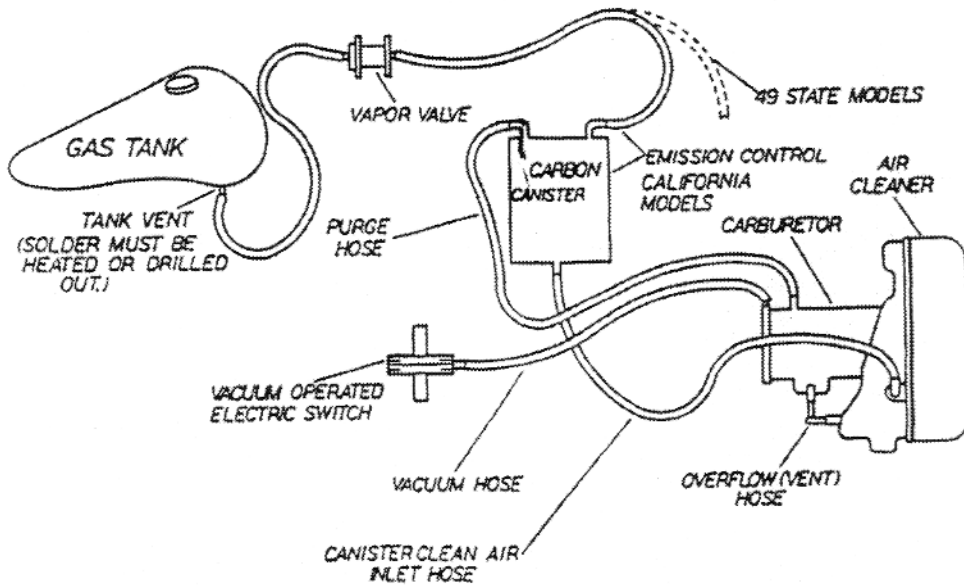
5. Place rubber grommets (6A) into mounting holes in front of fuel tank, then press steel inserts (6B) into the grommets (6A).
6. Pass mounting stud (9) through rear tank mounting hole in frame tube, then using a drop of 242 loctite on threads, place washers (10) and hand tighten rubber shoulder spacers (11A), (11B). Apply a thin coat of light grease to the rubber shoulder spacers (11A). This will make it easier to install the fuel tank.



7. Attach petcock to fuel tank at this time. Some after market petcocks can not be installed after the tank is mounted. It is recommended that teflon tape or sealer be used on petcock threads.

Note: At this time, If you have an 883 XL or have a XL model that has the Ignition switch located under the motor mount and you wish to relocate the switch. above the motor mount. Refer to the switch, horn and choke relocation kit and Instructions supplied.

8. Carefully slide fuel tank onto rear mount until front tank mounting holes align with the threaded holes in the front mount assembly. Pass bolts (8) through washers (7) and into threaded hole in front bracket (1).
9. Install fuel line and front crossover line using suitable fuel line and clamps. Also, at this time, install the gas caps.



10. For 1991 and earlier motorcycles equipped with original equipment or aftermarket two way valve gas caps, (positive negative pressure release) install Fatbob gas tanks according to the factory manual. No attention to the vent line is necessary as the cap will release any accumulated positive pressure and allow air in as fuel is used.

Caution: The fuel petcock must always be turned "off" when the motorcycle is not in use. Failure to do so, could result in fuel being forced past the float bowl needle and into the engine or on the ground.

11. For 1992 and later motorcycles, equipped with late model original Equipment one way valve gas caps (negative. pressure release only) the vent hose to the vapor valve (and charcoal canister on pollution control models must be re-routed to the right, front tank. The vent line must be heated to remove the solder plug (see illustration), The vent hose can then be connected to the tank vent.
12. When using two way valve gas caps, (positive negative pressure release) on 1992 and later models it's not necessary to use vent line.

Note: Fuel petcock must always be turned off when motorcycle is not in use.

Warning: Check all mounts and fuel line fittings before fueling and test riding.